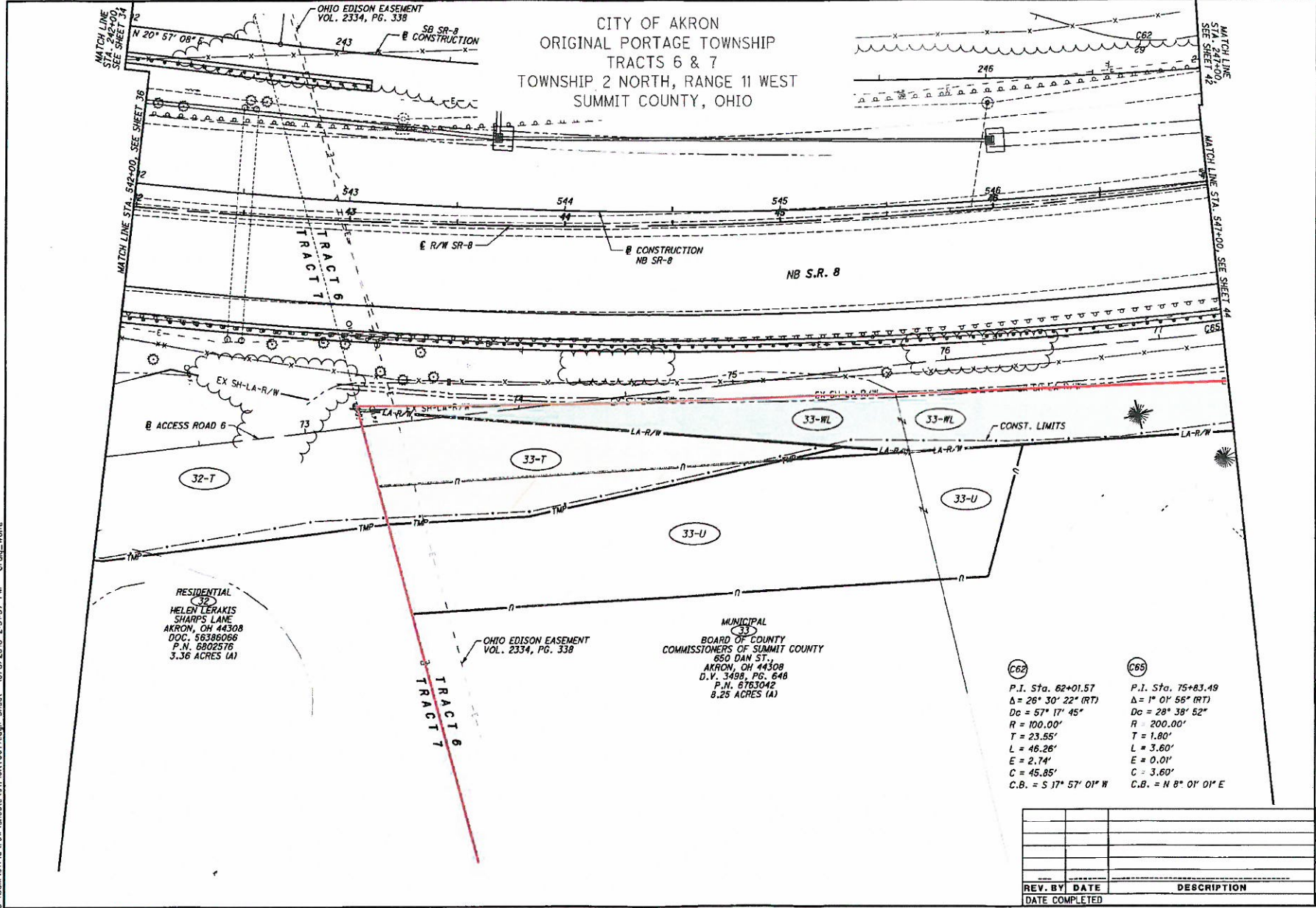


19-215

EXHIBIT A

CITY OF AKRON
ORIGINAL PORTAGE TOWNSHIP
TRACTS 6 & 7
TOWNSHIP 2 NORTH, RANGE 11 WEST
SUMMIT COUNTY, OHIO



MATCH LINE
STA. 542+00
SEE SHEET 34

MATCH LINE STA. 542+00
SEE SHEET 36

MATCH LINE
STA. 547+00
SEE SHEET 42

MATCH LINE STA. 547+00
SEE SHEET 44

RESIDENTIAL
(32)
HELEN LERAKIS
SHARPS LANE
AKRON, OH 44308
DOC. 58380866
P.N. 6802576
3.36 ACRES (A)

OHIO EDISON EASEMENT
VOL. 2334, PG. 338

MUNICIPAL
(33)
BOARD OF COUNTY
COMMISSIONERS OF SUMMIT COUNTY
650 DAN ST.
AKRON, OH 44308
D.V. 3498, PG. 648
P.N. 6763042
8.25 ACRES (A)

(C62)
P.I. Sta. 62+01.57
Δ = 26° 30' 22" (RT)
Dc = 57' 17" 45"
R = 100.00'
T = 23.55'
L = 46.26'
E = 2.74'
C = 45.85'
C.B. = S 17° 57' 01" W

(C65)
P.I. Sta. 75+83.49
Δ = 1° 01' 56" (RT)
Dc = 28° 38' 52"
R = 200.00'
T = 1.80'
L = 3.60'
E = 0.01'
C = 3.60'
C.B. = N 8° 01' 01" E



VERTICAL
SCALE IN FEET

PID NO. 91710
R/W DESIGNER CSW
R/W TOLERANCE RFM

RIGHT OF WAY TOPO SHEET
STA. 542+00 TO STA. 547+00

SUM-8-1.75

40/77

REV. BY	DATE	DESCRIPTION

S:\S\191710\row\sheets\91710R007A.dgn Sheet 10/3/2018 2:51:37 PM Craig Wolfe