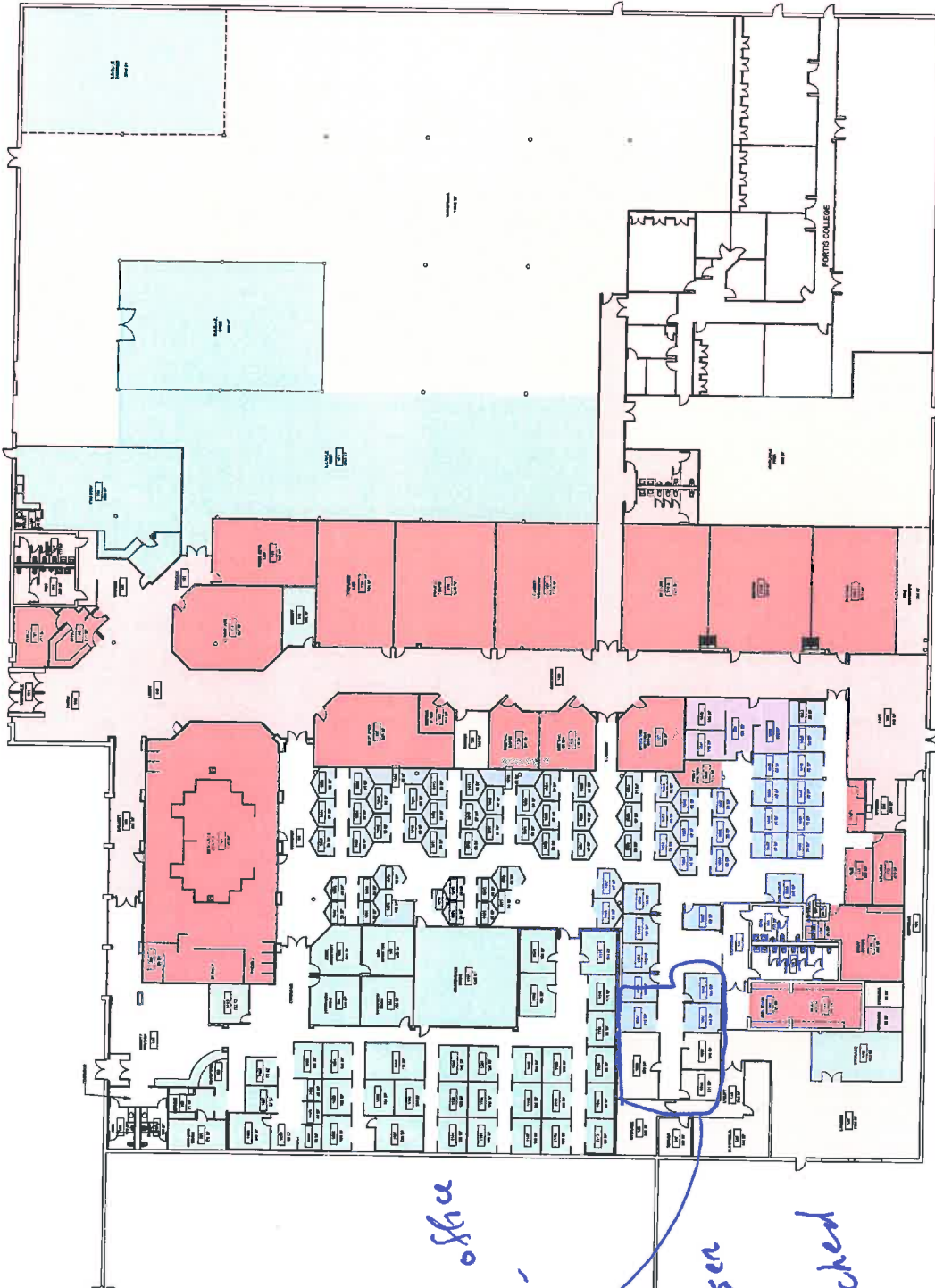


2021-274 Exhibit A

<input type="checkbox"/>	Partner Shared Circulation (11,649 SF)
<input type="checkbox"/>	Partner Shared (15,169 SF)
Sub-Total = 26,818 SF	
<input type="checkbox"/>	MOU Partner Circulation (5,937 SF)
<input type="checkbox"/>	MOU Partner (4,937 SF)
Sub-Total = 10,874 SF	
Total = 37,692 SF	
<input type="checkbox"/>	DJFS Offices/Support (19,657 SF)
<input type="checkbox"/>	DJFS Circulation (4,255 SF)
Total = 23,912 SF	
<input type="checkbox"/>	Land Bank
Total = 28,745 SF	
<input type="checkbox"/>	Consumer Affairs
Total = 688 SF	
<input type="checkbox"/>	Fortis College
Total = 9,288 SF	
Total Gross SF = 100,325	

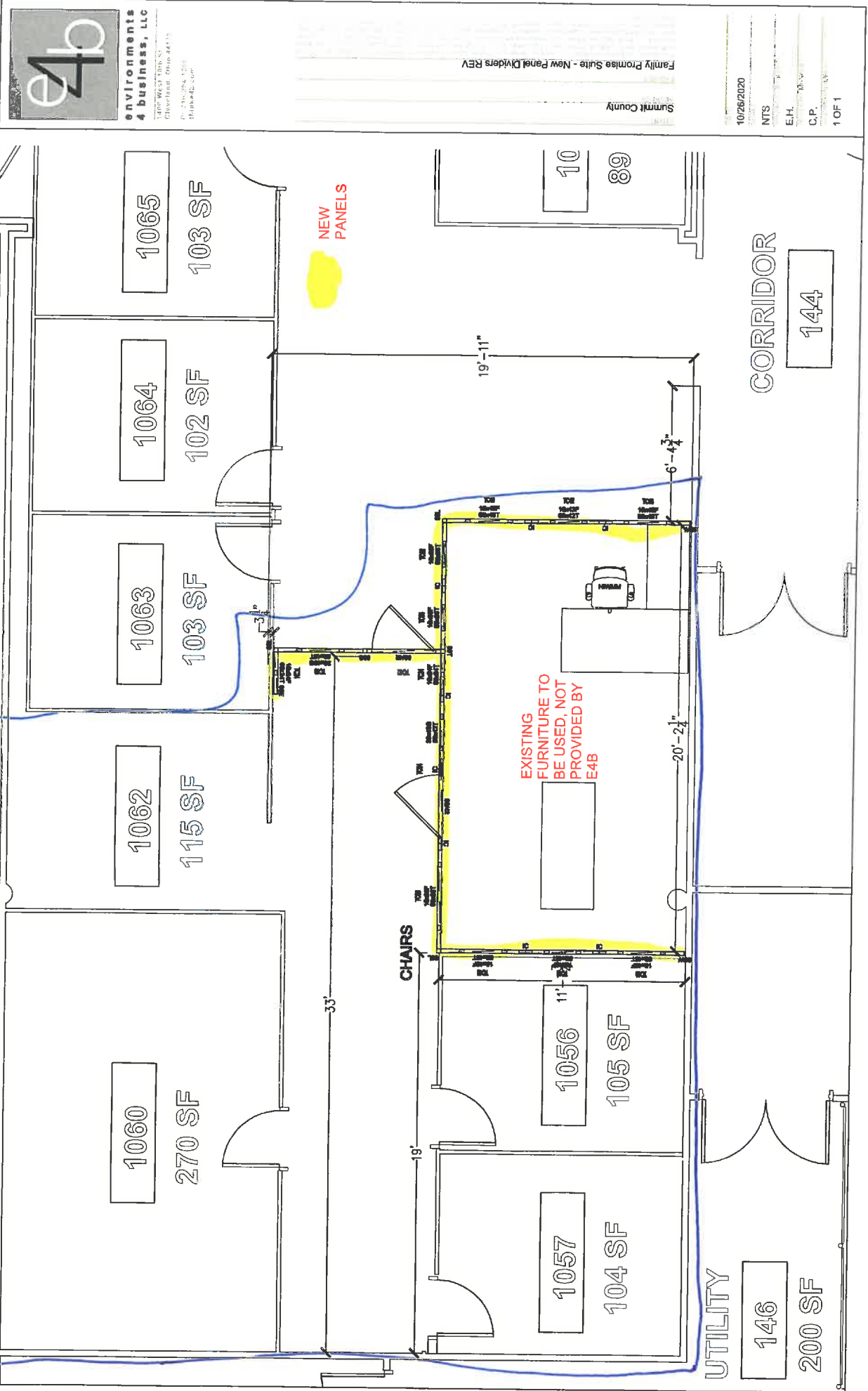


*Family office
 Promise -
 Space -
 See Larsen
 View
 Attached*



First Floor Plan
 SUMMIT COUNTY LAND BANK

Family Promise Office Space



environments
4 business, LLC
480 WEST 10TH ST
CLEVELAND, OHIO 44115
P: 216.276.1238
D: 216.276.1239
E: info@e4b.com

Summit County
Family Promise Suite - New Panel Dryers REV

10/26/2020
NTS
E.H.
C.P.
10F 1